



centraco® Command & Control

Enterprise Information Management Software

centraco® is an Enterprise Information Management Software platform that consolidates data and events from multiple sources into a unified and distributive user interface. Customized to the end user's Concept of Operations (CONOPS), centraco® provides improved situational awareness and data visualization for operational objectives.

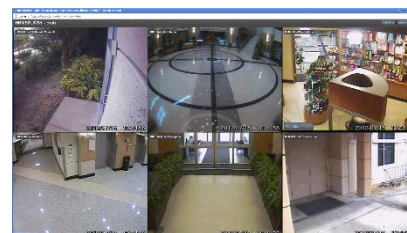
centraco® can support the integration of data from existing systems, including cameras and other sensor-based systems, within the same user interface. With centraco®, authorized personnel can simultaneously view, monitor and analyze data and other events from multiple geographic locations.

Features:

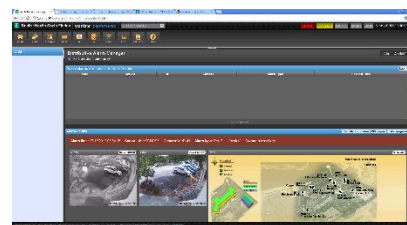
- Provides complete command & control through a single GUI
- Integrates 3rd party systems, such as VMS, Access Control, Intrusion Detection, and Wayside Detection Systems, directly or with Application Programming Interfaces (API) or Software Development Kits (SDK)
- Browser based GUI (supports IE, Chrome, Firefox & Safari)
- Distributive Alarm Manager consolidates alarm and alert information: manages alarms from multiple systems, assign/take ownership, audit trail/reporting, color coded, unique audio, integrated work flow
- Autocheck monitors health and status of all connected devices and network: monitors storage, processor and memory utilization, system uptime, network connectivity camera image quality, sensor status, system inventory, alerts sent to email and SMS
- Easy to configure user screens: user defined dashboard, favorite camera(s), RSS feeds, weather, news and more
- Detachable screens for multiple display and video wall support
- Complete reporting and logging of all activities and events
- Lightweight Directory Access Protocol (LDAP)/Active Directory integration
- Detailed layered mapping system: easy user configuration, multiple file formats, site overlay, Google Earth, ESRI and Bing support
- No distribution licensing fees or charges



Dynamic Mapping



Multiple Display Support



Distributive Alarm Manager

centraco® Command & Control



Sample Command & Control Facility

Duos Technologies Inc. provides a broad range of sophisticated intelligent technology solutions with an emphasis on mission critical applications. We combine an innovative business philosophy with a focus on customer service. Our specialty is the development and delivery of customized turnkey solutions for rail centric critical infrastructure systems.

All products, systems and solutions are backed by a 24 x 7 x 365 global training, maintenance and service program.

Standard Features

- Browser Based (supports IE, Chrome, Firefox & Safari)
- Shared event distribution and Distributive Alarm Management
- Customer Driven Embedded Concept of Operation
- 2D or 3D Graphical Navigation with Live Monitoring
- Multi-layered Perspective Driven Graphical User Interface (GUI)
- Customized Investigative Analysis Tools
- Automatic Correlation of Event Data (Event Merging)
- Multiple Seek and Search Criteria
- Common Distributive Event Handling
- Video Analytic and Content Analysis
- Multiple Target Event Representations
- Full Scale Redundancy and Alarm Verification
- Independent Client and Workstation Feature Sets
- Fully Capable Mobile Device Information Distribution
- Unlimited Web Clients

Samples of 3rd Party System Integrations

- Video Management Software
- Physical Access Control
- Intrusion Detection Systems
- RADAR & LIDAR Systems
- CBNRE Systems
- Building Controls
- RFID/Asset Tracking
- VOIP/SIP/IP Telephony & Radio Systems
- Most IT/IP based technology systems

duostech

Corporate Headquarters

6622 Southpoint Drive S
Suite 310
Jacksonville, FL 32216
Tel: (904) 296-2807
Fax: (904) 296-4103

Email

info@duostech.com

Web

www.duostech.com

duostech

www.duostech.com