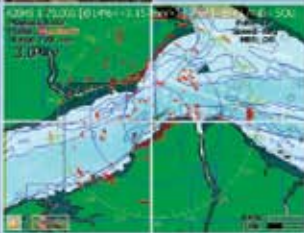


Radar-Integrated Intelligent Video Security Solutions



duostech

Radar-Integrated

Intelligent Video Security Solutions

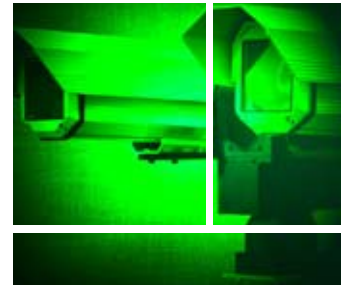
Early awareness and threat assessment are the key to a successful security solution. Duos' intelligent video and radar solutions utilize advanced sensor technology to provide early threat identification and verification in all weather conditions, providing a crucial time window to take decisive action and mitigate threat.



SOLID-STATE RADAR WITH INTEGRATED DOPPLER AND VIDEO SURVEILLANCE

We employ a three-stage concentric circle approach to long-range security to detect, assess, and deter a potential threat. Use of radar in the outermost circle enables long-range threat detection and identification as well as target tracking based on object behavior. A long-range camera and laser illuminator or a long-range thermal camera allow enhanced surveillance as the target moves into medium range.

- X-Band, S-Band, Frequency-Modulated Continuous Wave (FMCW) doppler radar
- Auto-positioned thermal camera or long-range camera with laser target illumination up to 3 km
- **praesidium**® full-scale video analytics suite with automated alarm manager
 - o Enhances video images, particularly in bad weather
 - o Analyzes video and applies software rules to detect a threat
 - o Automated threat alerts and distributive alarm management
- Customer-driven embedded concept of operations



ALL-TERRAIN VIRTUAL SECURITY SHIELD (vss™)

A multi-layer **vss**™ effectively secures a wide perimeter on land or at sea to detect, identify, and deter an approaching threat.

- Safeguards a 360 degree perimeter, a perimeter that can exceed 16 km in diameter
- Identifies and tracks unidentified objects within the perimeter
- Provides an early warning and distributed alert notification system
- Friend or Foe identification
- Incorporates ground or maritime radar
- Incorporates thermal cameras to ensure high-quality images in all lighting and weather conditions
- Deployment on land, aboard ship, on an offshore platform, or around a seaport
- Appropriate for border crossings, desert areas, remote outposts
- Multiple Communication/Networking options
- Third party sensor integration (Chemical, Biological, RFID, UVM, etc.)



With **centraco**™ Command and Control

All of Duos' intelligent solutions are command and control ready. Duos' state-of-the-art intelligent command and control platform, **centraco**™ provides a scalable information delivery and response solution that is designed to address operational and management challenges. Designed with years of "real life" situational input, the **centraco**™ platform is designed to perform in the most challenging and dynamic environments.

duostech
Duos Technologies, Inc.

6622 Southpoint Dr. S. | Suite 310 | Jacksonville, FL 32216 | P/ 904.296.2807 | F/ 904.296.4103 | info@duostech.com | www.duostech.com

